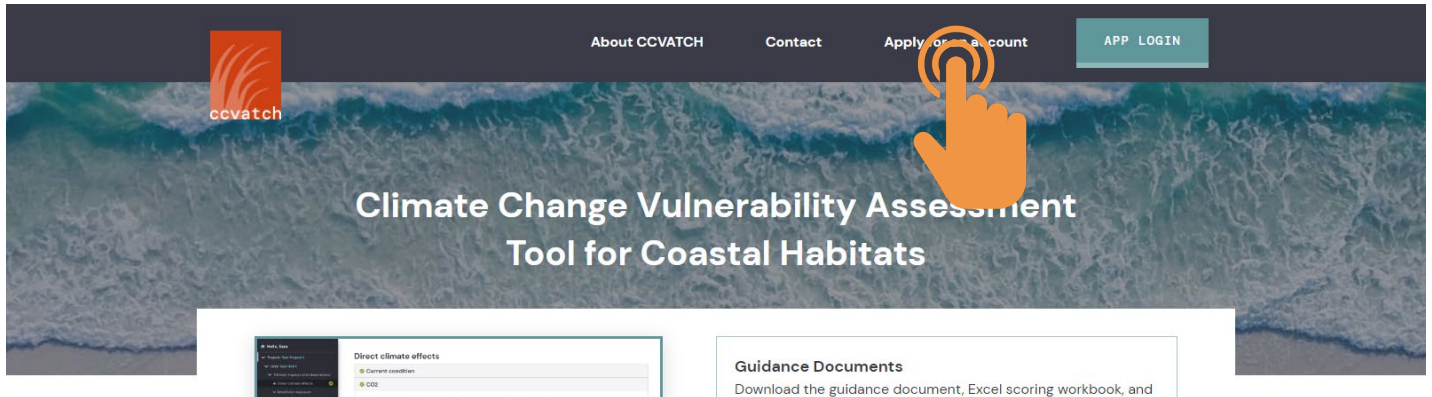


CLIMATE CHANGE VULNERABILITY ASSESSMENT TOOL FOR COASTAL HABITATS

Climatevulnerability.app Setup Guide

1. Apply for an account

Go to climatevulnerability.app. Click on “Apply for an account” at the top of the page. Please provide information about the intended project, habitat areas being assessed, and prior experience with CCVATCH.

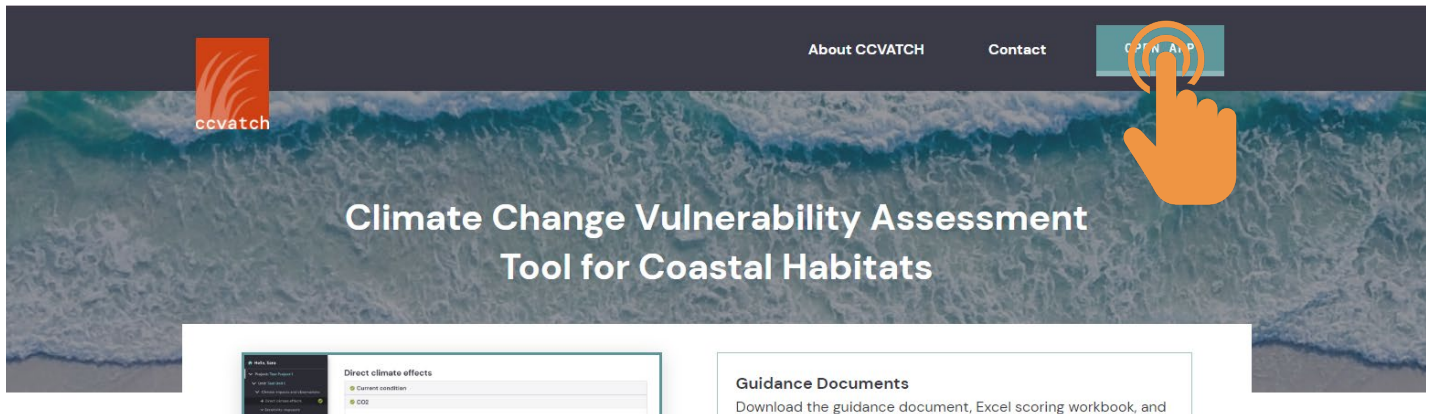


2. Log in to the app

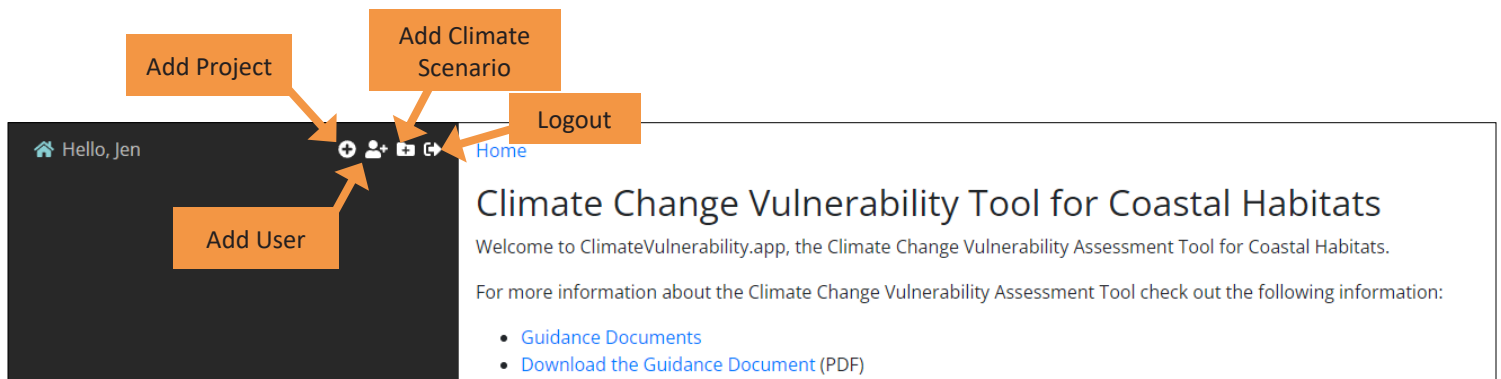
When you receive confirmation that your account has been set up, log in to the app with your email. You will be asked to create a password.

3. Open the app


After logging in, you will be redirected to the CCVATCH homepage. The open app button is at the top of the page where the app login button was.

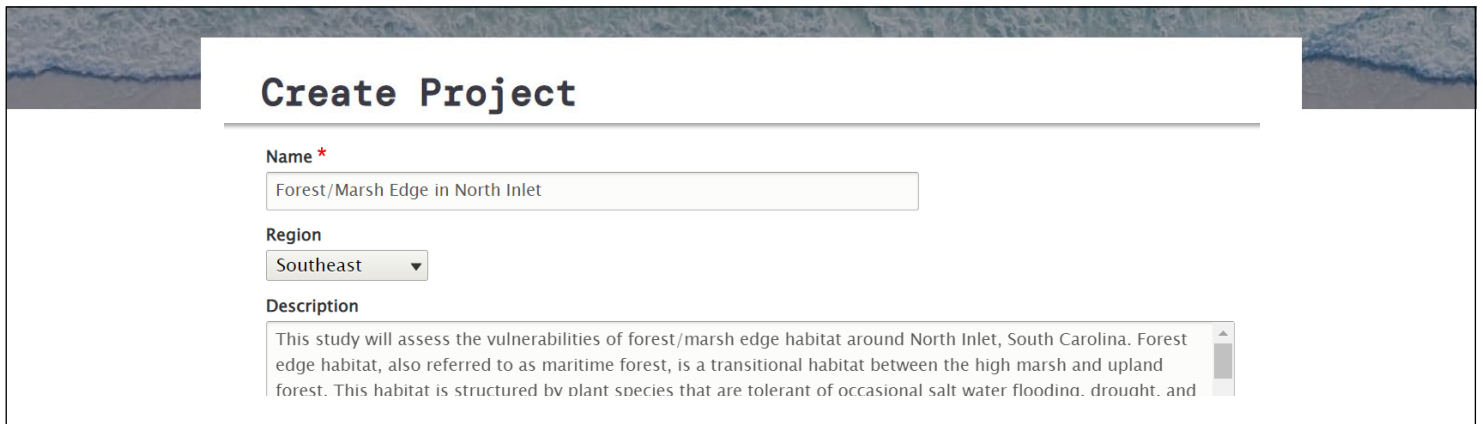


Links to the CCVATCH Guidance Document, resources, and app help is also available on the main page.



4. Add a project

Click on the  symbol to begin creating a new project. This will go to a new screen.



Create Project

Name *

Forest/Marsh Edge in North Inlet

Region


Southeast

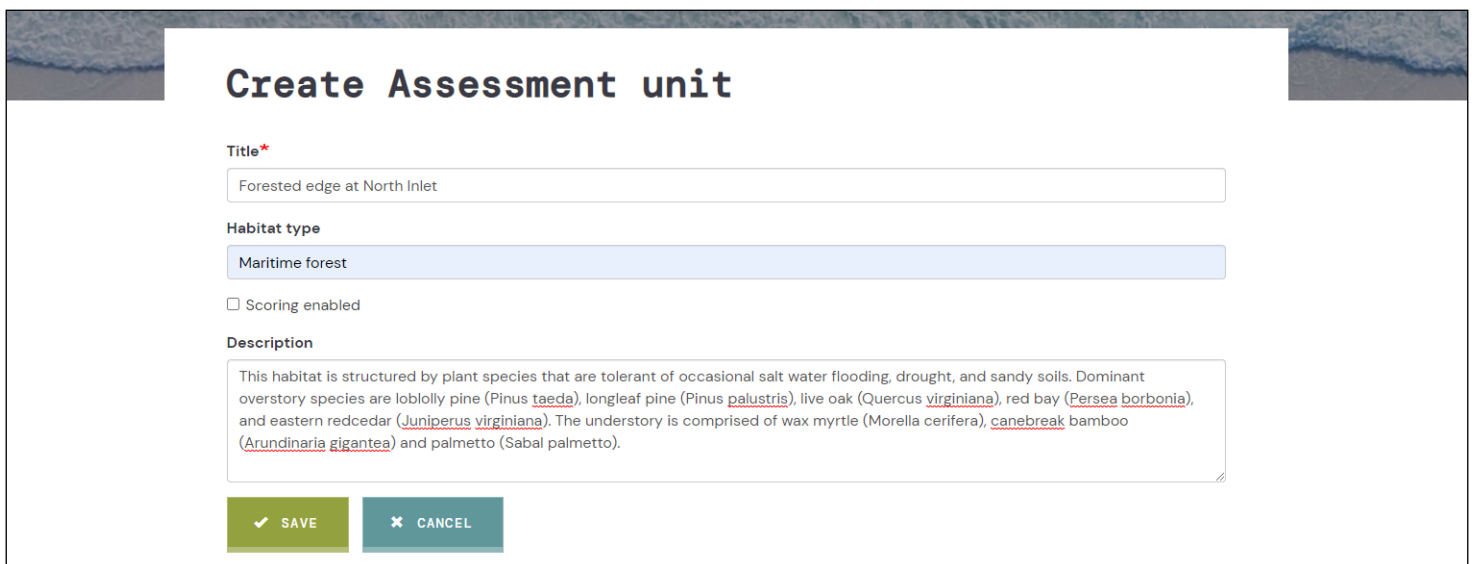
Description

This study will assess the vulnerabilities of forest/marsh edge habitat around North Inlet, South Carolina. Forest edge habitat, also referred to as maritime forest, is a transitional habitat between the high marsh and upland forest. This habitat is structured by plant species that are tolerant of occasional salt water flooding, drought, and

Enter a name for the overall project. This may be different from the names of the individual assessment units if more than one area is being assessed. The description should include information about the purpose of the project, location and type of assessment unit(s) (i.e. habitats), and current known stressors or conditions. Enter any specific instructions for the team members, such as timelines for completing the assessment.

5. Add assessment unit information

Scroll down the page to the “Assessment units” section. Click on the  symbol to create an assessment unit (you don’t have to give it a name before clicking the plus sign). Assessment units are areas that will be considered as one study area in the vulnerability assessment. Generally they will have a dominant habitat type and have a defined management boundary. Be sure to select SAVE when finished. This will go back to the “Create Project” screen.



Create Assessment unit

Title*

Forested edge at North Inlet

Habitat type

Maritime forest

Scoring enabled

Description

This habitat is structured by plant species that are tolerant of occasional salt water flooding, drought, and sandy soils. Dominant overstory species are loblolly pine ([Pinus taeda](#)), longleaf pine ([Pinus palustris](#)), live oak ([Quercus virginiana](#)), red bay ([Persea borbonia](#)), and eastern redcedar ([Juniperus virginiana](#)). The understory is comprised of wax myrtle ([Morella cerifera](#)), [canebreak bamboo](#) ([Arundinaria gigantea](#)) and palmetto ([Sabal palmetto](#)).

✓ SAVE ✕ CANCEL

6. Add team members

Scroll down to the “Team Members” section. Click on the  symbol to add team members. ***You must add yourself as a team member in order to be able to access the project.***

7. Add supporting information

Files such as map images, pdf documents, power point presentation, or zipped files (such as GIS database files) can be shared with team members through the app. You can also include links to URLs.

Be sure to select SAVE when all information has been added. This go back to the main page where the project will now be listed (you may have to refresh the page).